

SARAH'S MEADOW

Working with you to restore our precious river environment

An Evenlode Catchment Partnership Project

Milton-under-Wychwood parish council asked the ECP to work with them on this area for the community. The field lies wet, and we discovered that there was a spring running through the field in an old stone culvert. We wanted to liberate the spring and create two ponds for aquatic life.



Community involvement has been immense!

Why it's important



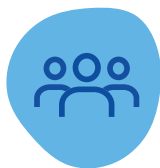
Together, we created a mosaic of habitats across the parish council owned part of the field, and gained open access for the public. There were areas for planting native trees as well as creating water habitats.



The project was started by Sarah Olney, working for Natural England. She sadly passed away suddenly before the project could be completed. The ECP took over the project delivery and we commissioned a bench from Oxford Oak in memory of Sarah. This now sits overlooking the ponds. The oak was donated by Blenheim Estates. This whole "Eco Area" has been renamed in Sarah's honour.



Project highlights



100+ local volunteers



snipe spotted in meadow



460 trees planted in less than 3 hours

Restoring the Evenlode Catchment for People & Wildlife



THE EVENLODE CATCHMENT PARTNERSHIP

Funding urgently needed

Since 2014, the Evenlode Catchment Partnership (ECP) has been dedicated to improving water quality and flood management, enriching biodiversity, fostering greater community engagement with our rivers and increasing climate resilience across the Evenlode catchment area.



“Our rivers deserve to be saved”
Chloe, age 12

Why it's important



Much of our incredible work has been funded by Thames Water. However, Thames Water have failed to deliver the promised upgrades to their sewage treatment works. Due to the serious harm from sewage pollution to our rivers and wider catchment, we have made the moral decision to not accept any more funding from them beyond March 2025.

The ECP now desperately needs your support. We have made great strides, but we need your help to continue. By donating, fundraising or volunteering, you can help us restore and protect our precious river environment for generations to come. Join us in saving our water habitats.



Donate today

you can donate on our website or by scanning the QR code. Thank you for your support!

Restoring the
Evenlode Catchment
for People & Wildlife



www.evenlodecatchmentpartnership.org.uk