

Evenlode Catchment Species Richness

Key

- Evenlode Catchment Boundary
- Rivers and Watercourses
- Buildings
- Roads
- Field Boundaries

Species Richness

Number of species per 1km²

- No data
- 1 - 25
- 26 - 50
- 51 - 75
- 76 - 100
- >100

The maps on the top half of the page (A.1 and A.2) are showing species richness for the 1970s and the 2010s. The Evenlode catchment has been split into 1km squares and the number of different plant, fungi and animal species within these squares has been counted to calculate species richness. The red squares indicate where there are no data available i.e no records exist for these areas.

The maps on the bottom half of the page (B.1 and B.2) show the 1km squares that are within the top 10% species richness counts across the catchment for both the 1970s and 2010s.

Datasets

The information displayed on the maps have been obtained from the **National Biodiversity Network (NBN) Atlas**, a collaborative project that aggregates biodiversity data from multiple sources and makes it available and usable online. The NBN Atlas is the UK's largest collection of freely available biodiversity data. A very large volume of data exists for the Evenlode catchment and these maps provide only a sample of the type of mapping that may be possible using the NBN Atlas. It is important to note that the data within the NBN Atlas is not evenly distributed among locations, time periods, environments and taxa. Consequently there may be some instances of bias in the data that need to be considered when interpreting them.

Further information on these datasets can be found on the NBN Atlas website:
<https://nbnatlas.org/>

ECP Website

<https://www.wildoxfordshire.org.uk/biodiversity-river-catchments/evenlode-catchment/>

Date of production: 02/03/2022	Version: 1.0	Drawn by: K Thompson
-----------------------------------	-----------------	-------------------------

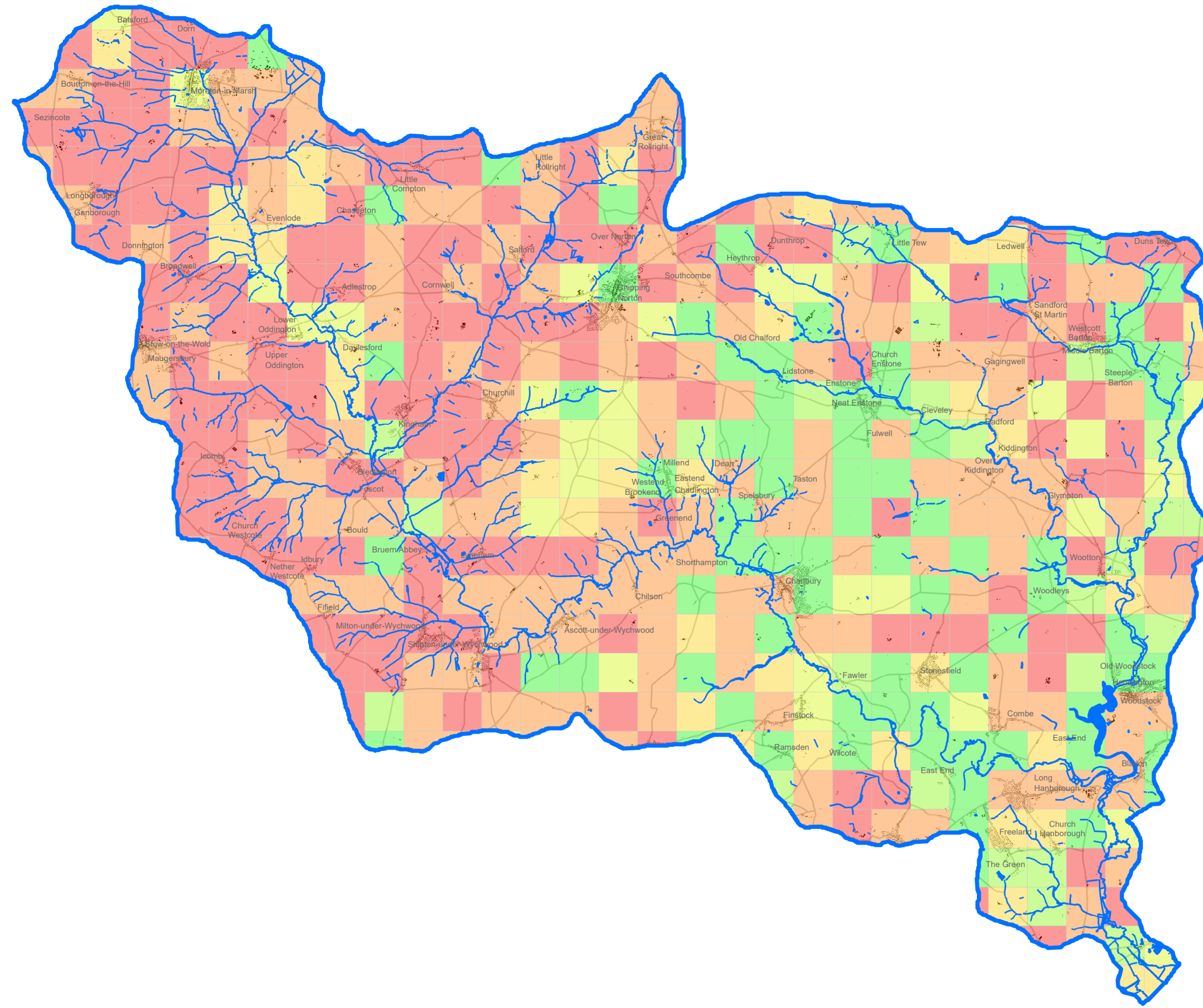
Data Sources

Environment Agency
National Biodiversity Network Atlas
Ordnance Survey

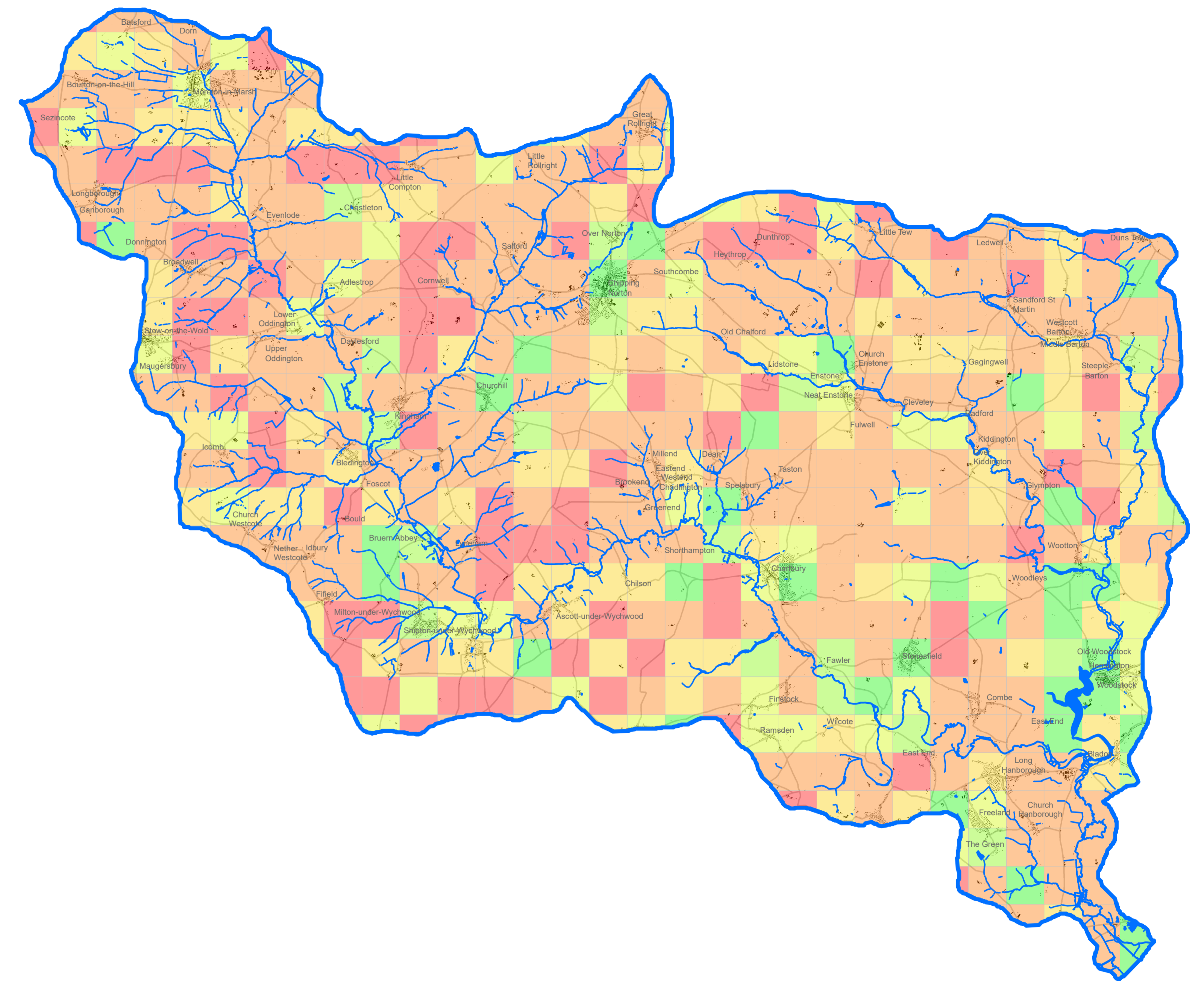
0 1 2 4 6 8 Km

Scale (at A0): 1:75,000

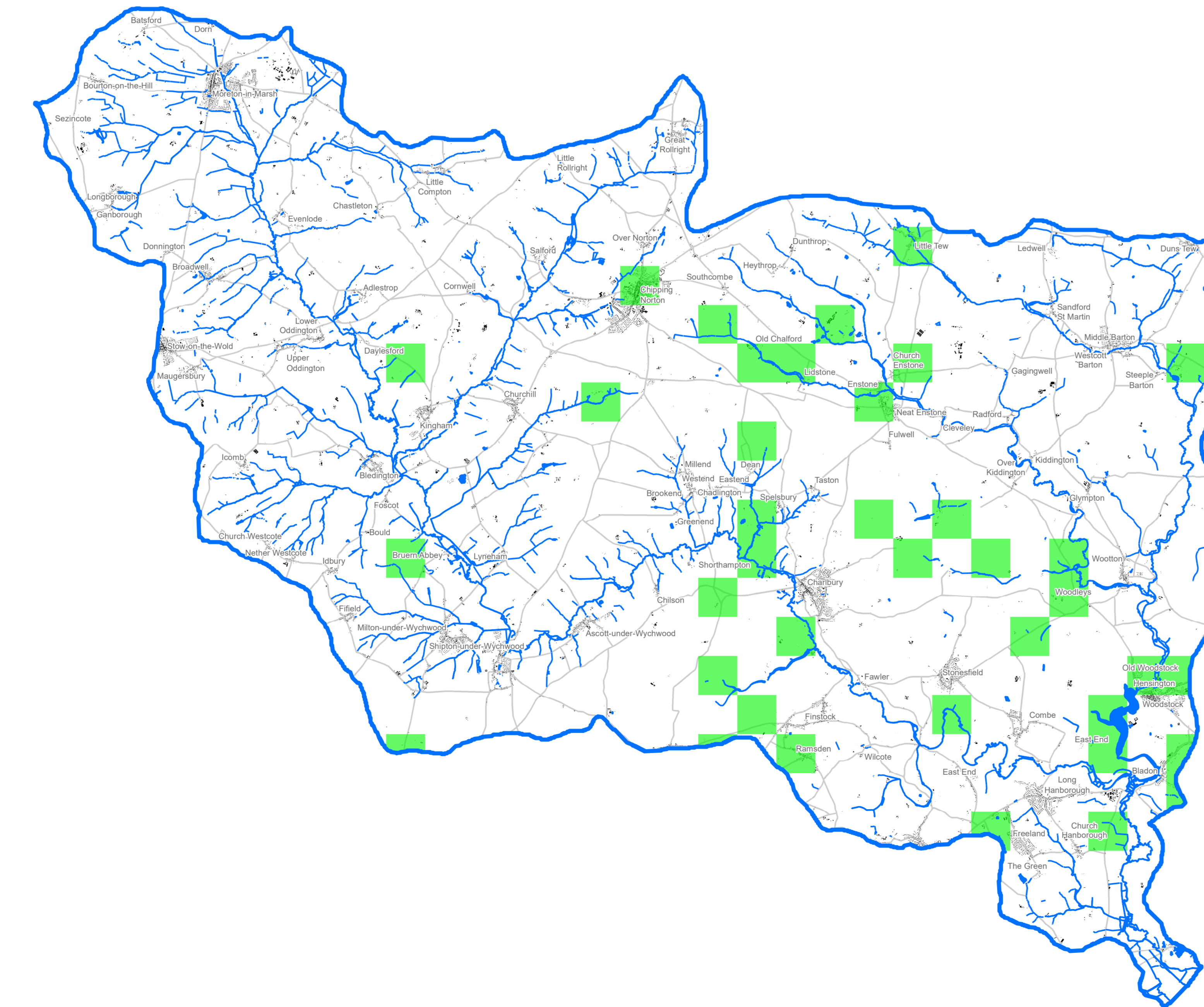
A.1 Species Richness - 1970s



A.2 Species Richness - 2010s



B.1 Species richness 1970s - top 10%



B.2 Species richness 2010s - top 10%

