

# Evenlode Catchment

## Catchment Quality Indicator Species

### Key

- Evenlode Catchment Boundary
- Rivers and Watercourses
- Railway
- Field Boundaries
- Roads
- Buildings

### Indicator Species

- Curlew
- Snipe
- European Water Vole
- Water-crowfoots

### Symbology is organised by record date:

- 1940s to 1960s
- 1970s
- 1980s
- 1990s
- 2000s
- 2010s
- 2020s

This map displays the records of four iconic water dependent species within the Evenlode catchment. These species can be used as proxies to give an understanding of catchment health. The greater the presence of these species the healthier the catchment.

Caution should be taken when interpreting this map. Species records are not evenly distributed among locations, time periods, environments and taxa. Consequently there may be some instances of bias in the data that need to be considered when interpreting them.

**Curlew**  
Curlew is Europe's largest wading bird and the UK population is of international importance. They are found primarily on extensively managed rough grassland, moorlands and bogs. The species is a UK BAP priority and is listed on the UK Birds of Conservation Concern Red List and has an IUCN status of near-threatened.

**Snipe**  
Snipe is a wading bird found on moorland, damp pastures and wet flushes. The UK snipe population is in decline especially in lowland wet grassland areas. As such it is listed on the Birds of Conservation Concern Amber list.

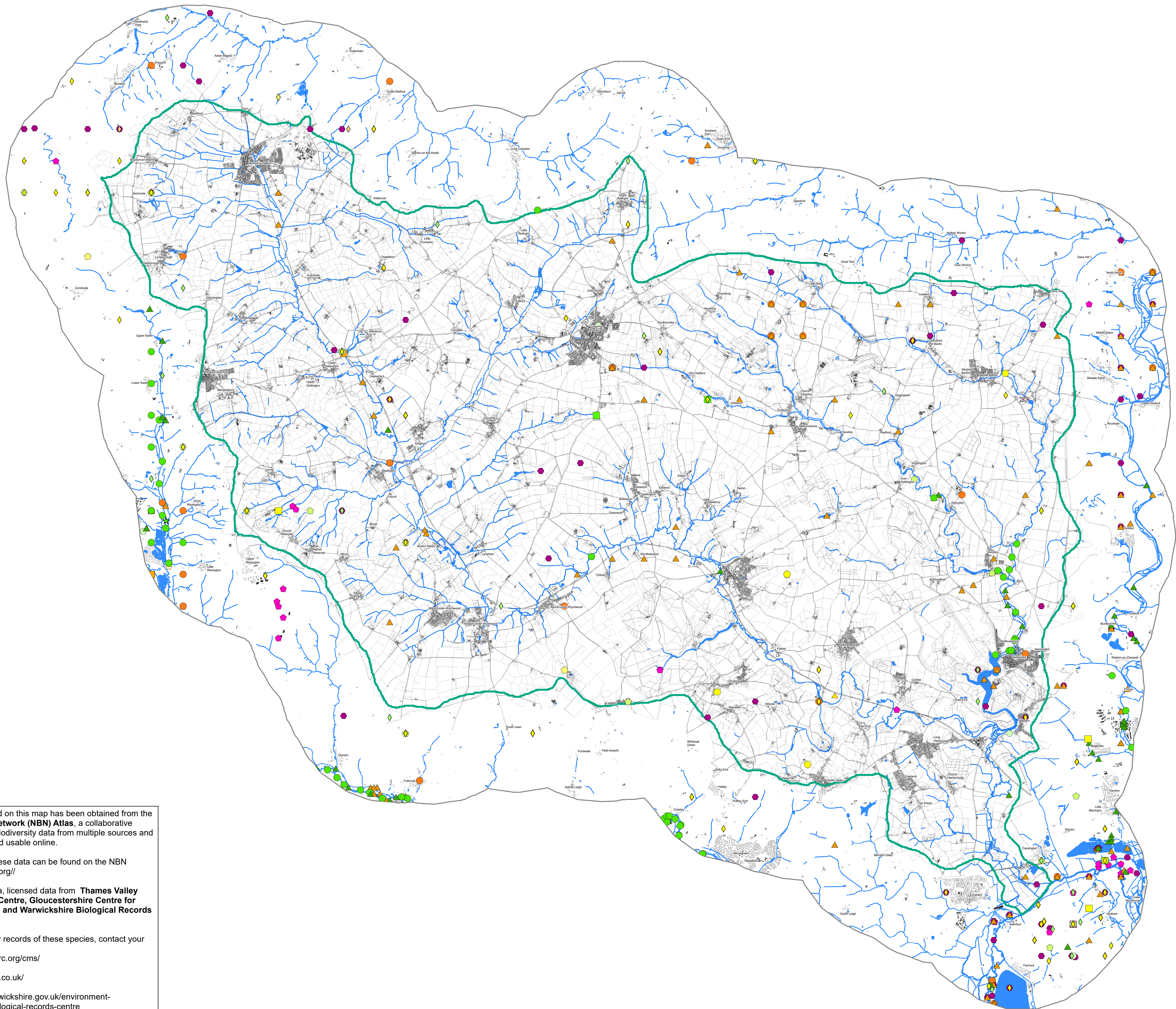
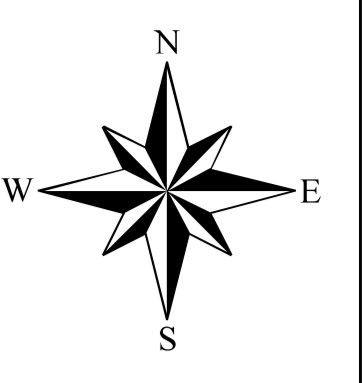
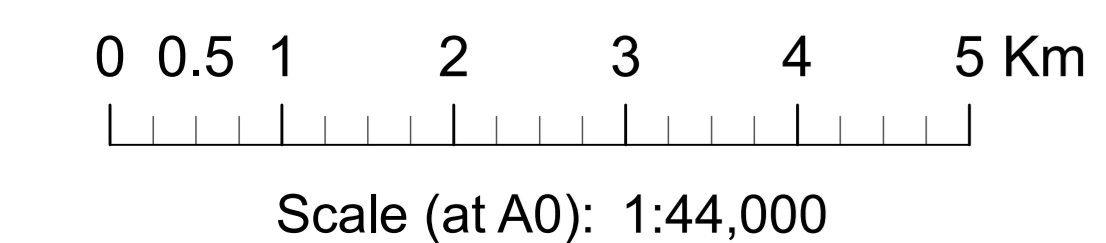
**Water vole**  
Water vole is an aquatic rodents found along watercourses and in marshes, reeds and wet moorland. It is under threat from habitat loss and predation by American mink. As such it is listed as endangered on both the Great Britain and England Red List for Mammals.

**Water-crowfoots**  
Water-crowfoots are aquatic plants part of the buttercup family. They are found in ponds, ditches and streams and are indicators of good morphological condition in rivers.

**ECP Website**  
<https://www.wildoxfordshire.org.uk/evenlode/evenlode-catchment-partnership>

Date of production: 14/02/2023	Version: 1.0	Drawn by: K Thompson
-----------------------------------	-----------------	-------------------------

**Data Sources**  
National Biodiversity Network, TVERC, GCER, WBRC  
Environment Agency  
Ordnance Survey



The information displayed on this map has been obtained from the **National Biodiversity Network (NBN) Atlas**, a collaborative project that aggregates biodiversity data from multiple sources and makes them available and usable online.

Further information on these data can be found on the NBN website: <https://nbnatlas.org/>

Alongside NBN Atlas data, licensed data from **Thames Valley Environmental Record Centre, Gloucestershire Centre for Environmental Records and Warwickshire Biological Records Centre** are displayed.

If you wish to provide any records of these species, contact your local record centre:  
**TVERC** - <https://www.tverc.org/cms/>

**GCER** - <https://www.gcer.co.uk/>

**WBRC** - <https://www.warwickshire.gov.uk/environment-ecology/warwickshire-biological-records-centre>

Data courtesy of National Biodiversity Network Atlas (NBN). Atlas occurrence download at <http://nbnatlas.org> (<https://ror.org/00mcyey41>). Accessed 14 February 2023. Original datasets provided by: Royal Society for the Protection of Birds, Biological Record Centre, Environment Agency, Gloucestershire Centre for Environmental Records, British Trust for Ornithology, Botanical Society of Britain & Ireland, National Trust. This map incorporates biodiversity data supplied by Thames Valley Environmental Records Centre (TVERC) under licence reference TVERC/21/846, and is copyright to TVERC and/or its partners, biodiversity data supplied by Gloucestershire Centre for Environmental Records and data provided by the Warwickshire Biological Record Centre copyright Warwickshire County Council 2022