

# Evenlode Catchment

## Geology

### Key

- Evenlode Catchment Boundary
- Rivers and Watercourses
- Buildings
- Roads
- Field Boundaries
- Geological Conservation Review Sites
- Local Geological Sites
- Faults

### Superficial Geology (displayed using hatched symbology as below)

- |  |                                   |
|--|-----------------------------------|
| Alluvium                                 | Moreton Member                    |
| Oadby Member                             | Northern Drift Formation          |
| Glaciofluvial Deposits, Mid Pleistocene  | Northmoor Sand and Gravel Member  |
| Till, Mid Pleistocene                    | Paxford Gravel Member             |
| Freeland Sand and Gravel Member          | Peat                              |
| Hanborough Gravel Member                 | Rissington Member                 |
| Northmoor Sand and Gravel                | River Terrace Deposits            |
| Summertown-Radley Sand and Gravel Member | Sherborne Member                  |
| Wolvercote Sand and Gravel Member        | Summertown-Radley Sand and Gravel |
| Combe Member                             | Tufa                              |
| Daylesford Member                        | Wolford Heath Member              |
| Head                                     |                                   |

### Bedrock Geology (displayed using the BGS standard colour scheme as below)

- |  |   |
|--|---|
| Hazelbury Bryan Formation - Sandstone, siltstone and mudstone  | Signet Member - Mudstone  |
| Kingston Formation - Sandstone   | Taynton Limestone Formation - Ooidal limestone                  |
| Stanford Formation - Limestone   | White Limestone Formation - Limestone                           |
| Kellaways Clay Member - Mudstone   | White Limestone Formation - Mudstone                            |
| Kellaways Formation And Oxford Clay Formation (Undifferentiated) - Mudstone, siltstone and sandstone | Aston Limestone Formation - Limestone                           |
| Kellaways Sand Member - Sandstone and siltstone, interbedded   | Clypeus Grit Member - Ooidal limestone                          |
| Oxford Clay Formation And West Walton Formation (Undifferentiated) - Mudstone                        | Horsehay Sand Formation - Sandstone                             |
| Peterborough Member - Mudstone   | Notgrove Member - Ooidal limestone                              |
| Cornbrash Formation - Limestone  | Salperton Limestone Formation - Ooidal limestone                |
| Chipping Norton Limestone Formation - Ooidal limestone   | Birdlip Limestone Formation - Ooidal limestone                  |
| Eyford Member - Limestone  | Cleeve Cloud Member - Ooidal limestone                          |
| Fuller's Earth Formation - Interbedded limestone and mudstone  | Harford Member - Mudstone                                       |
| Fuller's Earth Formation - Mudstone  | Harford Member - Sandstone and mudstone                         |
| Forest Marble Formation - Limestone  | Leckhampton Member - Limestone                                  |
| Forest Marble Formation - Interbedded limestone and mudstone   | Northampton Sand Formation - Sandstone, limestone and ironstone |
| Forest Marble Formation - Mudstone   | Scottsuar Member - Limestone                                    |
| Hampen Formation - Limestone   | Bridport Sand Formation - Sandstone                             |
| Sharp's Hill Formation - Argillaceous rocks with subordinate sandstone and limestone                 | Whitby Mudstone Formation - Mudstone                            |
| Sharp's Hill Formation - Interbedded limestone and mudstone  | Dyrham Formation - Siltstone and mudstone, interbedded          |
| Signet Member - Limestone  | Marlstone Rock Formation - Ferruginous limestone and ironstone  |
|  | Marlstone Rock Formation - Ferruginous limestone                |
|  | Charmouth Mudstone Formation - Limestone                        |
|  | Charmouth Mudstone Formation - Mudstone                         |

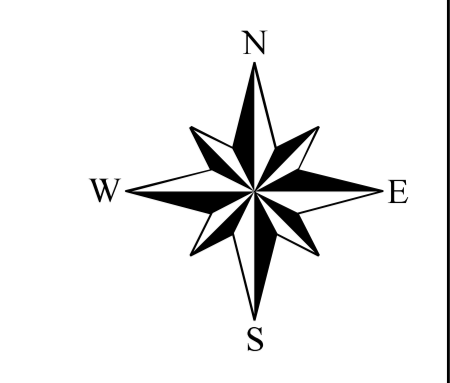
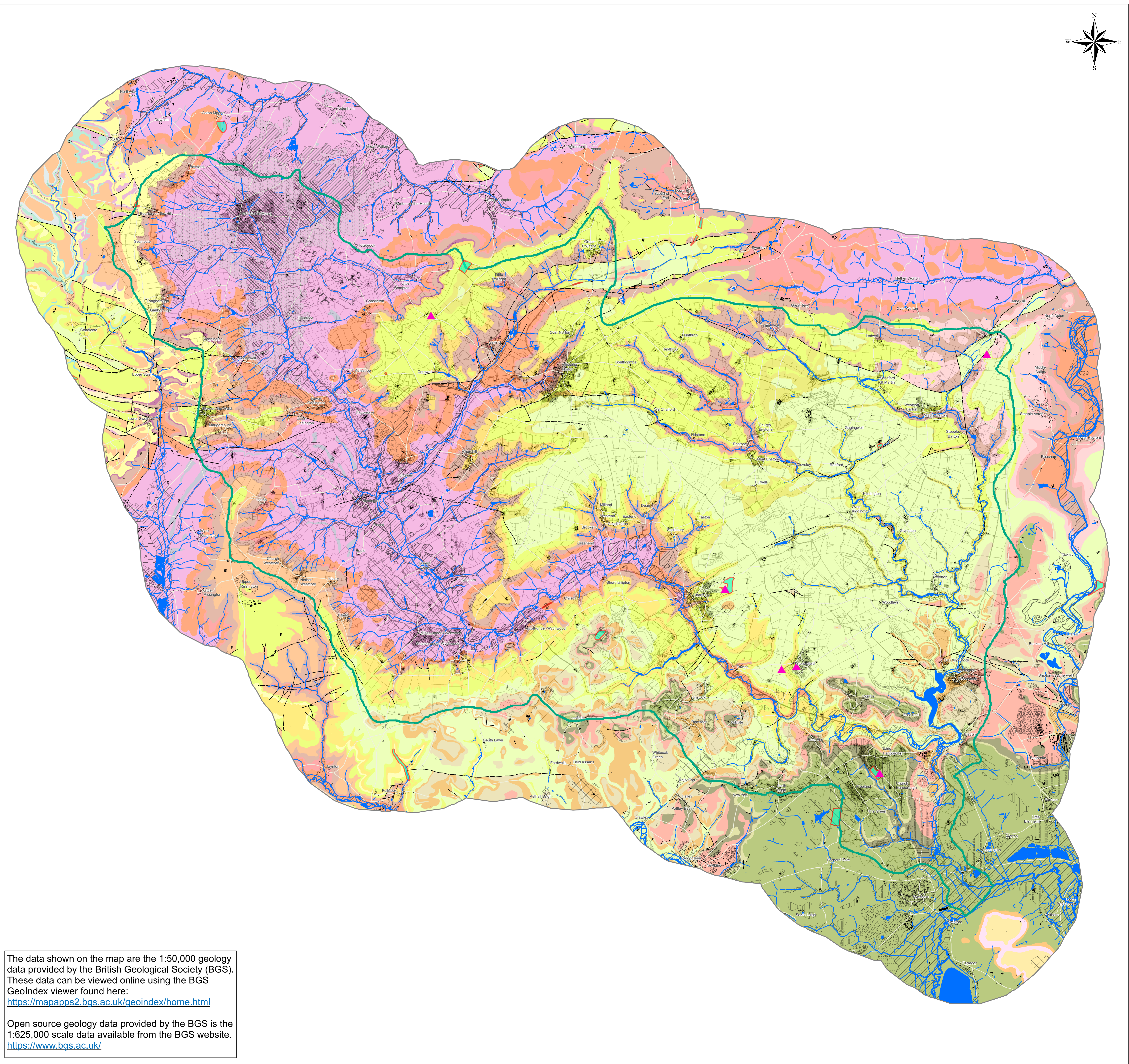
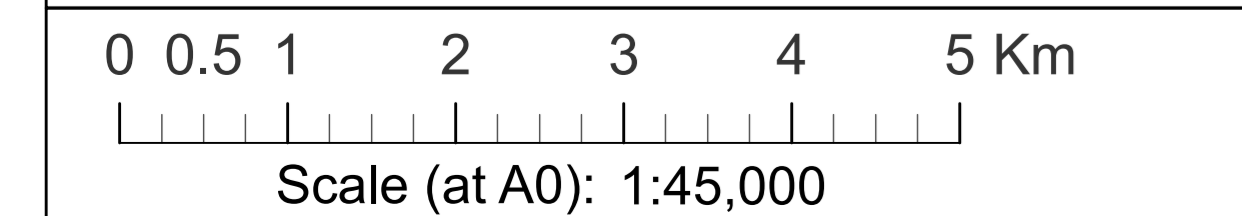
### The datasets displayed on this map include:

- Geological Conservation Review Sites** - sites of national and international importance needed to show all the key scientific elements of the Earth heritage of Britain.
- Local Geological Sites** - sites exhibiting important geological and geomorphological features as determined by the local authority.
- Faults** - a fault is a fracture or zone of fractures between two blocks of rock.
- Superficial Geology** - the youngest geological deposits formed during the most recent period of geological time.
- Bedrock Geology** - the main mass of rocks forming the Earth that are present everywhere, whether exposed at the surface in outcrops or concealed beneath superficial deposits or water.

Further information on these datasets can be found on the British Geological Society website:  
<https://www.bgs.ac.uk/>

**Data Sources**  
 Environment Agency, British Geological Society, Warwickshire Biological Records Centre, Thames Valley Environmental Records Centre, Gloucestershire Centre for Environmental Records, Ordnance Survey

**ECP Website**  
<https://www.wildoxfordshire.org.uk/biodiversity/river-catchments/evenlode-catchment/>  
 Date of production: 02/03/2022  
 Version: 1.0  
 Drawn by: K Thompson



The data shown on the map are the 1:50,000 geology data provided by the British Geological Society (BGS). These data can be viewed online using the BGS GeolIndex viewer found here:  
<https://mapapps2.bgs.ac.uk/geoindex/home.html>  
 Open source geology data provided by the BGS is the 1:625,000 scale data available from the BGS website.  
<https://www.bgs.ac.uk/>