

Evenlode Catchment Flood sources, pathways and receptors

- Key**
- Catchment**
- Evenlode Catchment Boundary
 - Rivers and Watercourses
 - Lakes and ponds
 - Field Boundaries
- Flood sources, pathways and receptors**
- Areas contributing the least
 - Areas contributing to the flood
 - Pathways for the movement of floodwater
 - Floodplain areas where floodwater accumulates
 - Floodplain hotspots where most water accumulates
- Consented discharges**
- Agriculture
 - Miscellaneous
 - Sewage - not water company
 - Sewage - water company
 - Sewage and Trade combined
 - Trade
- Flooding hotspots**
- Name
- Assets at risk**
- Roads
 - Railway Station
 - Railway Line
 - Buildings
- CORINE Land Cover 2018**
- Urban
 - Urban Industrial
 - Airports
 - Mineral extraction sites
 - Sport and leisure facilities
 - Non-irrigated arable land
 - Pasture
 - Woodland

Datasets

Consented discharges - locations of where consent has been given to discharge into controlled waters. These are the discharges to rivers which the Environment Agency regulates.

Flow pathways, sources and receptors - this dataset was produced by reclassifying the SCIMAP hydrological connectivity raster to identify areas that contribute most to flooding. SCIMAP is a risk-mapping framework designed to identify where in the landscape diffuse pollution is most likely to be originating. More information on SCIMAP can be found here: <https://scimap.org.uk/>

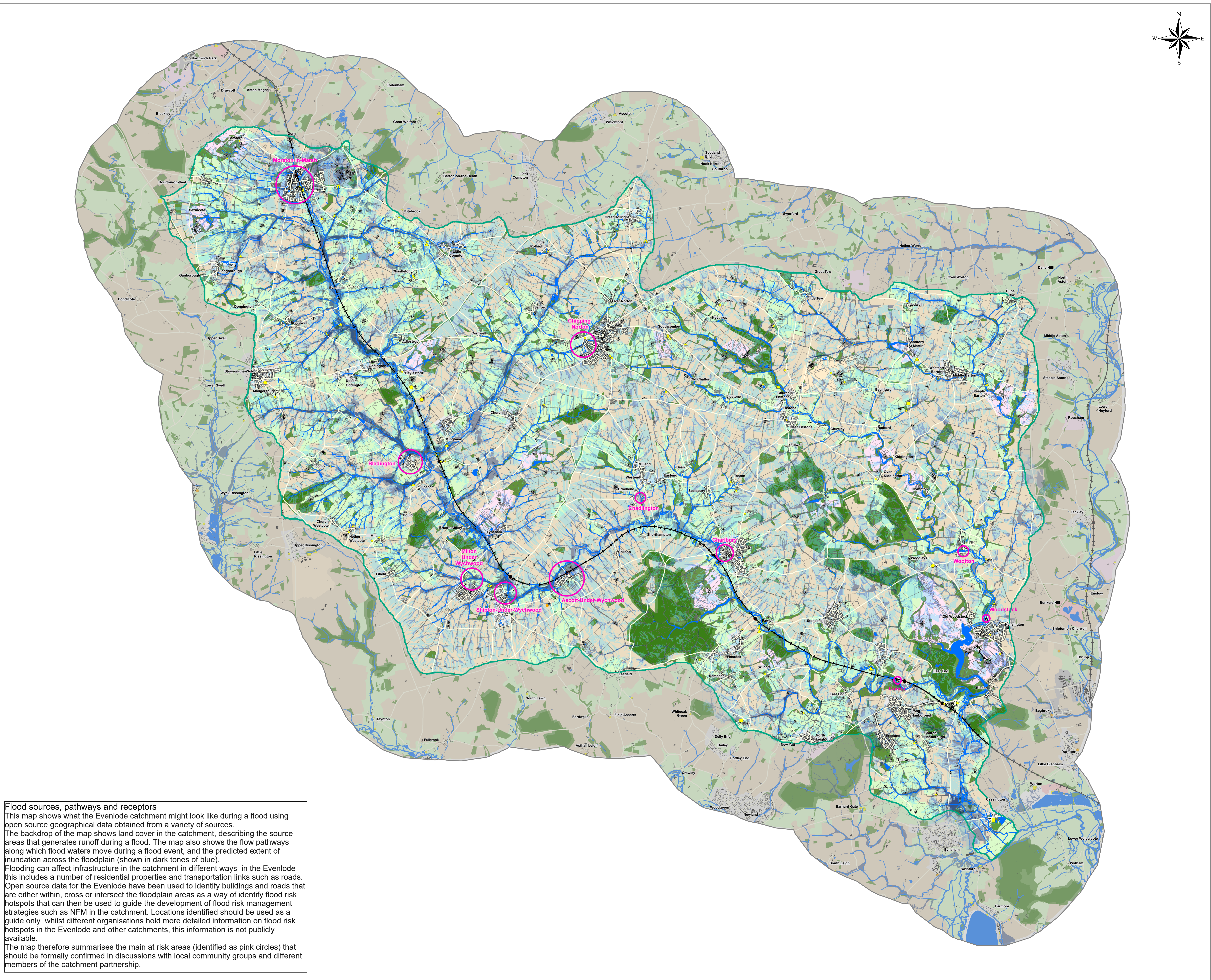
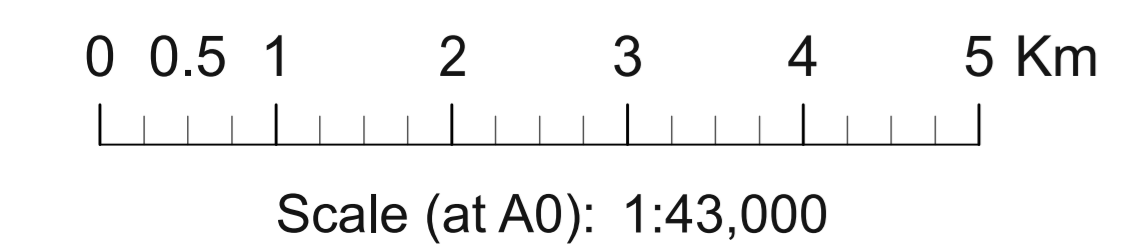
CORINE Land Cover 2018 - the CORINE Land Cover (CLC) is an European programme providing consistent information on land cover and land cover changes across Europe. The dataset is based on photointerpretation of satellite images. The data displayed on the map is for 2018, the most recent version of CLC. More information can be found here: <https://land.copernicus.eu/pan-european/corine-land-cover/>

National Forest Inventory - identified woodland from the 2019 Forestry Commission National Forest Inventory (NFI). The NFI programme monitors woodland and trees over 0.5ha. Further information on this dataset can be found here: <https://www.forestresearch.gov.uk/tools-and-resources/national-forest-inventory/about-the-nfi/>

ECP Website
<https://www.wildoxfordshire.org.uk/biodiversity/river-catchments/evenlode-catchment/>

Date of production: 02/03/2022	Version: 1.0	Drawn by: K Thompson
-----------------------------------	-----------------	-------------------------

Data Sources
Environment Agency, Natural England, Forestry Commission, Durham University, UK Centre for Hydrology and Ecology, Ordnance Survey



Flood sources, pathways and receptors
This map shows what the Evenlode catchment might look like during a flood using open source geographical data obtained from a variety of sources. The backdrop of the map shows land cover in the catchment, describing the source areas that generates runoff during a flood. The map also shows the flow pathways along which flood waters move during a flood event, and the predicted extent of inundation across the floodplain (shown in dark tones of blue). Flooding can affect infrastructure in the catchment in different ways in the Evenlode this includes a number of residential properties and transportation links such as roads. Open source data for the Evenlode have been used to identify buildings and roads that are either within, cross or intersect the floodplain areas as a way of identify flood risk hotspots that can then be used to guide the development of flood risk management strategies such as NFM in the catchment. Locations identified should be used as a guide only whilst different organisations hold more detailed information on flood risk hotspots in the Evenlode and other catchments, this information is not publicly available. The map therefore summarises the main at risk areas (identified as pink circles) that should be formally confirmed in discussions with local community groups and different members of the catchment partnership.