

Evenlode Catchment Environmental Designations

- Key**
- Evenlode Catchment Boundary
 - Rivers and Watercourses
 - Buildings
 - Roads
 - Field Boundaries
- National and International Designations**
- Cotswolds Area of Outstanding Natural Beauty
 - Special Areas of Conservation
 - Sites of Special Scientific Interest
 - National Nature Reserves
- Local Designations**
- Berks, Bucks & Oxon Wildlife Trust Reserve
 - Local Wildlife Site
 - Woodland Trust Reserve
- Priority Habitats**
- Coastal and floodplain grazing marsh
 - Deciduous woodland
 - Good quality semi-improved grassland
 - Lowland calcareous grassland
 - Lowland dry acid grassland
 - Lowland fens
 - Lowland meadows
 - No main habitat but additional habitats present
 - Purple moor grass and rush pastures
 - Traditional orchard
 - Priority River Habitat
- Source Protection Zones**
- Zone 1
 - Zone 2
 - Zone 3

Datasets
 A number of different designations are present in the Evenlode catchment and are described below.

Areas of Outstanding Natural Beauty - designated areas to protect natural beauty.

Sites of Special Scientific Interest - areas of land protected for their natural heritage value e.g for British wildlife or landscapes.

National Nature Reserves - areas protected for habitats, species and/or geology.

Special Areas of Conservation - protected sites to promote the establishment of a European network of conservation sites to protect vulnerable habitat types and species.

Local Wildlife Sites - areas of land that are especially important for their wildlife.

Priority Habitats - inventory of Natural Environment and Rural Communities Act (2006) Section 41 habitats of principal importance.

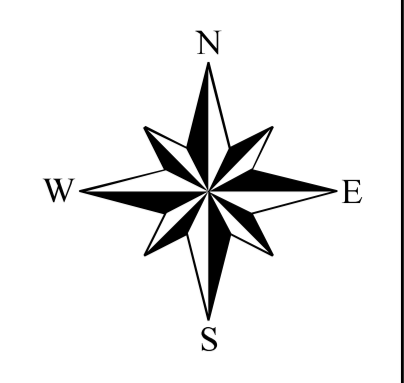
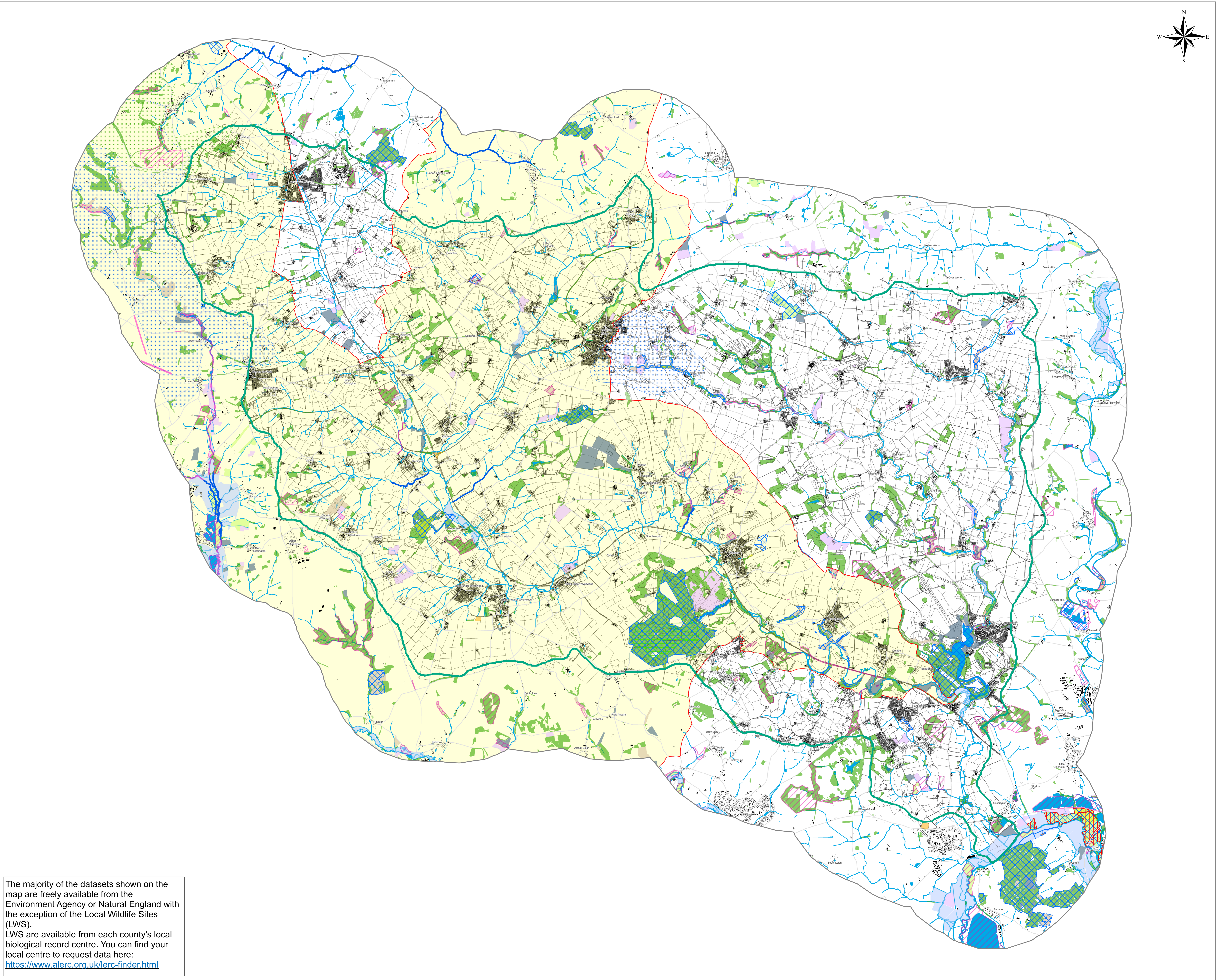
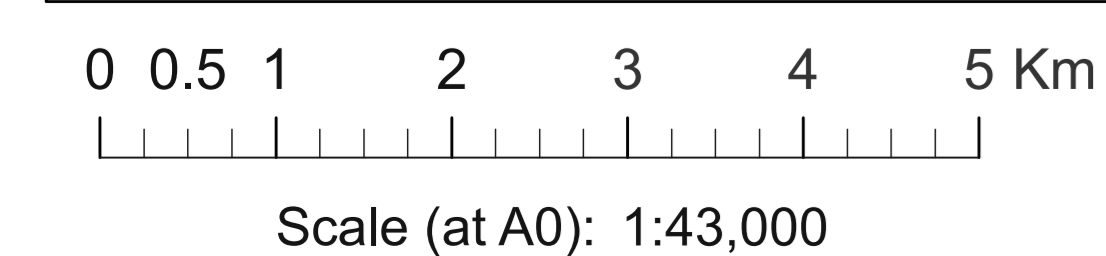
Priority River Habitat - rivers and streams that demonstrate a high degree of naturalness

Source Protection Zones - Source Protection Zones identify the catchment to a groundwater borehole, well or spring that is used for public drinking water supply. The zones show the risk of contamination from any activities that might cause pollution. There are 3 main zones (inner, outer and total catchment) which are defined by travel time to the source.

ECP Website
<https://www.wildoxfordshire.org.uk/biodiversity/river-catchments/evenlode-catchment/>

Date of production: 02/03/2022	Version: 1.0	Drawn by: K Thompson
--------------------------------	--------------	----------------------

Data Sources
 Environment Agency, Warwickshire Biological Records Centre, Thames Valley Environmental Records Centre, Gloucestershire Centre for Environmental Records, Natural England, Ordnance Survey



The majority of the datasets shown on the map are freely available from the Environment Agency or Natural England with the exception of the Local Wildlife Sites (LWS). LWS are available from each county's local biological record centre. You can find your local centre to request data here: <https://www.alerc.org.uk/lerc-finder.html>